

SmartWashSolutions

Pinpoint Process Control.™



**A REVOLUTIONARY ADVANCEMENT
IN FOOD SAFETY**





PARTNER WITH SMARTWASH SOLUTIONS TO ACHIEVE FOOD SAFETY COMPLIANCE

Water is the most important asset in any food processing plant, and it is also identified as a high-risk hazard for contamination. Our stringent, preventive control measures ensure your wash water complies with the EFSA recommendations or with the European and/or local regulations and help you avoid the disaster that an outbreak or recall could bring to your brand.





STOP CROSSING YOUR FINGERS

MITIGATE CROSS-CONTAMINATION

SmartWash Solutions' revolutionary food wash enhancers optimise the effectiveness of the wash process when applied to standard chlorine-based wash systems and ensure the consistent mitigation of microbial contaminant cross-contamination.

**Maximises chlorine efficiency
and efficacy**

Increases throughput

**Easily integrates into existing
wash systems**

GRAS (Generally Recognized As Safe)



SW[™]
original formula

The original patented, breakthrough food wash enhancer, providing the means to mitigate bacterial cross-contamination. Certified Kosher.

SW^{o™}
organic formula

All the power and science of SmartWash original, specifically formulated for organically-grown produce. Certified organic and Kosher. *Patent Pending*

SW^{pro™}
protein formula

The same bacterial cross-contamination mitigation of SmartWash produce wash enhancer, specifically formulated for meat and poultry. *Patent Pending*

SmartShine
SmartWash Solutions

Formulated to disinfect and clean flow cells effectively, SmartShine, is a multi-purpose solution. *Patent Pending*

SWS[™]
SmartWashSolutions

GET CONTROL

CONTROL WASH WATER CHEMISTRY

Increase your process control with the patented Automated SmartWash Analytical Platform (ASAP)™, the most precise and accurate process control equipment on the market for chlorine-based wash systems. The ASAP easily integrates into existing wash systems, monitoring and controlling wash water chemistry by precisely injecting calculated amounts of chlorine and SmartWash Solutions to ensure optimal levels of each.

Monitors and controls wash water pH and chlorine levels

Monitors wash water temperature

Communicates wash water data to Process Pro Data Live (PPDL)*

Stops wash lines before CCP violations (Preventive Control)

Turnkey Pinpoint Process Control™

Advanced technology & touchscreen interface

Improves food safety & wash line efficiency

*Patent Pending



CASH FLOW

SAVE TIME, LABOR AND MONEY

Yield faster, more accurate results with the patented Pinpoint Calibration System™. Test, calibrate and verify chlorine sensors in minutes without shutting down the wash line. Our advanced technology yields faster results and is proven to be much more accurate than manual calibration, saving time, labor and money.

Get faster, more accurate results

Ensures a repeatable testing baseline

Easily integrates with existing wash systems without permanent installation

Compatible with all chlorine process control automation systems

Requires limited personnel

Removes errors associated with dilution methods and technician capability



SWS™
SmartWashSolutions

SMART DATA

TRACK WASH LINE EFFICIENCY

Monitor your wash system's water chemistry in real-time with Process ProData Live (PPDL)[™]. Take your documentation and information into the live streaming arena, giving managers the ability to track line efficiency and productivity in real time from any location in the world. PPDL's accurate records and data analytics help you achieve compliance with EFSA recommendations or with the European and/or local regulations and meet customer audit requirements.

Collects and delivers data in real time

Access information instantly, anywhere

Improves line efficiency and food safety

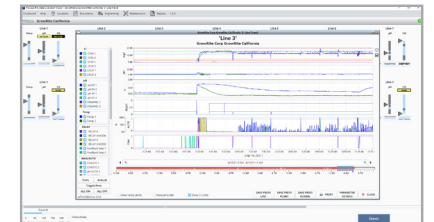
Enables data mining and reporting

Track wash line trends with built-in reports

Electronic review and sign-off

Tools to track calibration and verification online

Get troubleshooting and assistance from SmartWash Solutions experts



SmartWashSolutions[™]
Process ProData Live. 

SWS[™]
SmartWashSolutions

FULL SERVICE WASH

SECURE A FULL-SERVICE PARTNERSHIP PROGRAM WITH SMARTWASH SOLUTIONS

Get the highest level of food safety in the industry with SmartWash Solutions' integrated system of products coupled with our Pinpoint Process Control™. Our team of experts stays abreast of regulatory changes so you're never caught unprepared for audits or regulatory changes and challenges. With SmartWash Solutions, you're never alone.

With our full-service partnership you'll have:

State-of-the-art equipment

Expert calibration

Ongoing maintenance (incl. spare parts)

Extensive training

Easy integration

Real-time process control monitoring



Get the highest level
of food safety in the industry with
SmartWash Solutions products coupled with
our Pinpoint Process Control™.

INTERESTED IN A FREE TRIAL?

CALL +31 (0)6 - 1544 - 1290

or email

info@smartwashesolutions.com



SmartWashSolutions
Pinpoint Process Control.™ 

www.smartwashesolutions.com



©2021 SMARTWASH SOLUTIONS, BV.
ALL RIGHTS RESERVED.